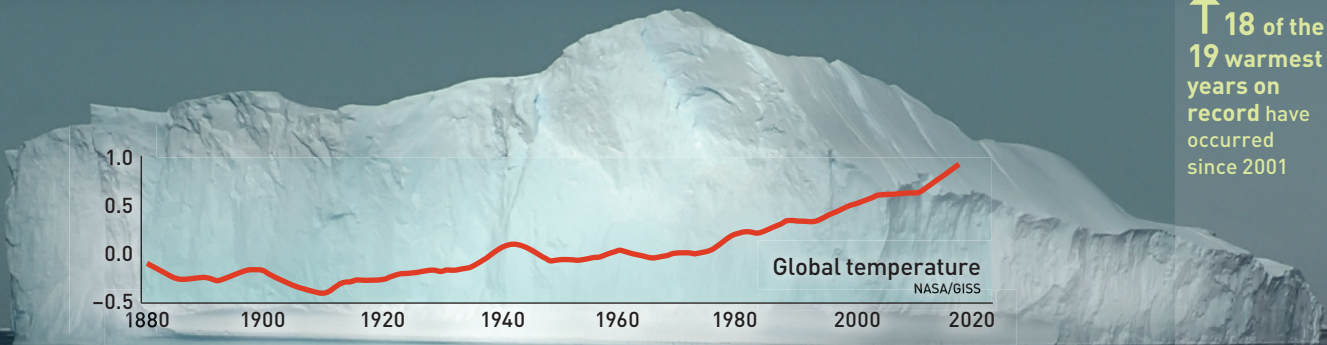
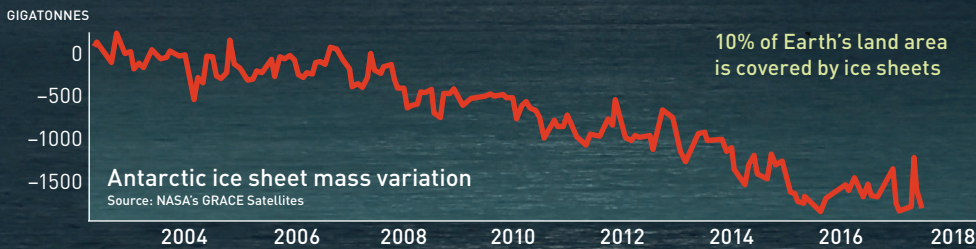


Rising Ocean Levels

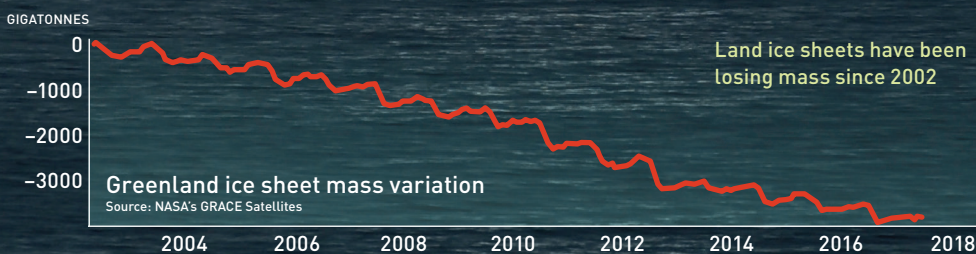
The global ocean covers 71% of the Earth's surface and contains around 97% of the Earth's water. Even a small change in ocean levels—for example, from rapidly melting ice sheets—can have a significant impact. For more on how photonics is being used to track global environmental change, see this month's cover story (p. 24).



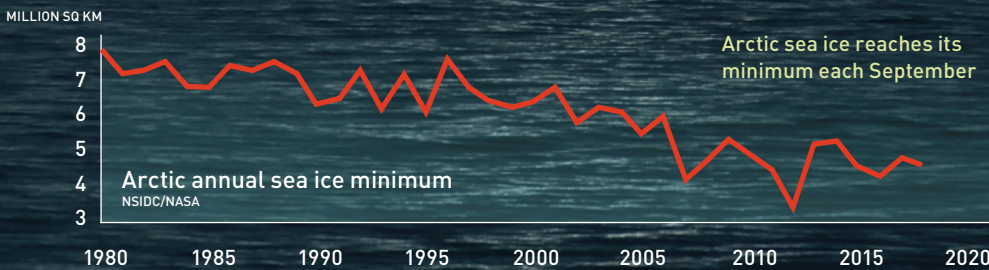
↑ 18 of the 19 warmest years on record have occurred since 2001



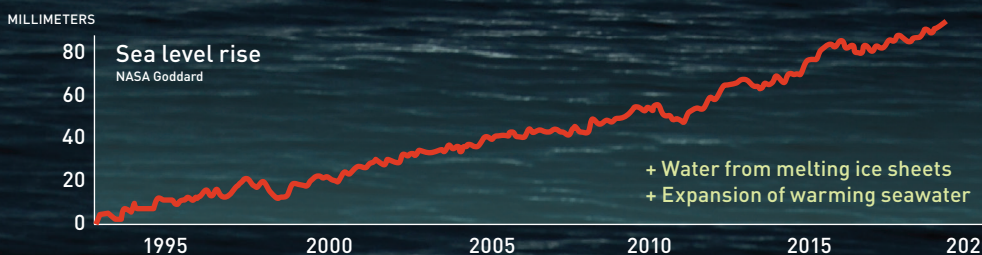
Antarctic ice sheet
↓ 127.0 gigatonnes per year



Greenland ice sheet
↓ 286.0 gigatonnes per year



Sea ice minimum
↓ 12.8% per decade



Sea level
↑ 3.3 millimeters per year